

DRAFT COASTAL ZONE MANAGEMENT PLAN TAMIL NADU

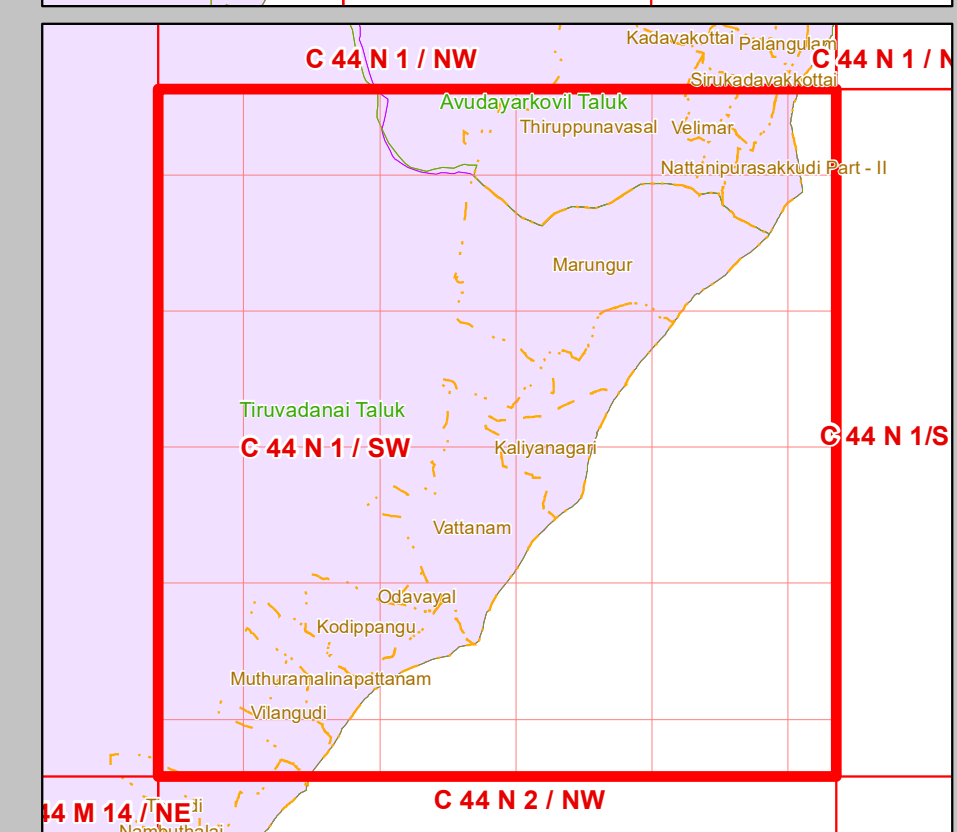
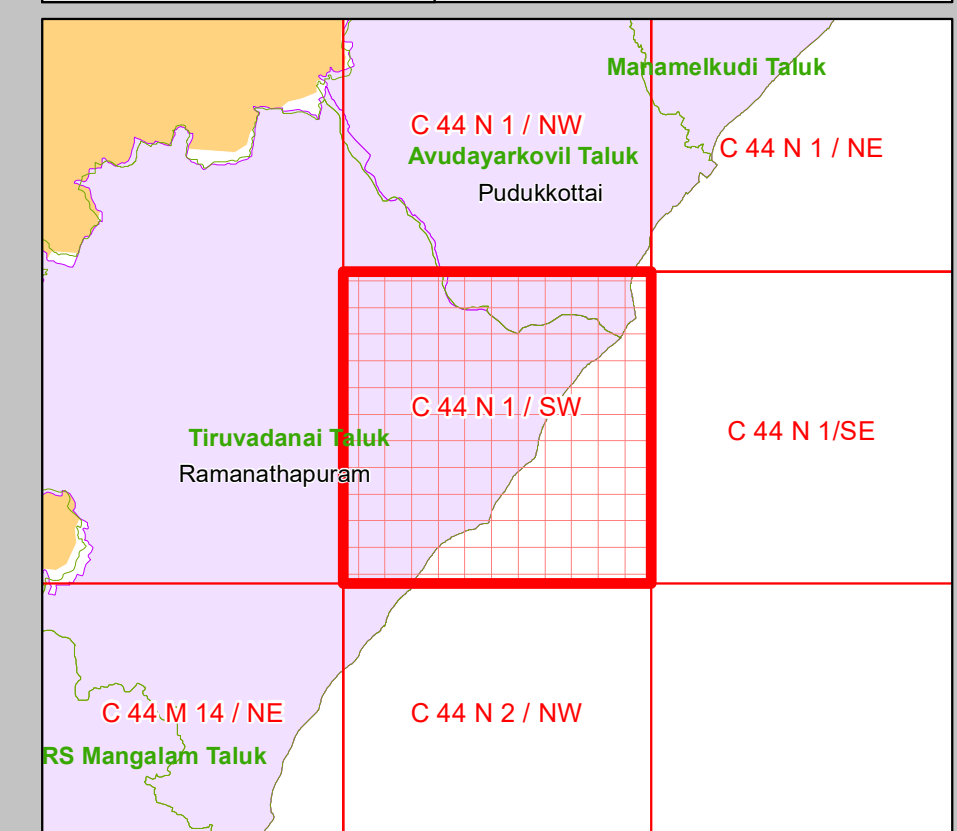
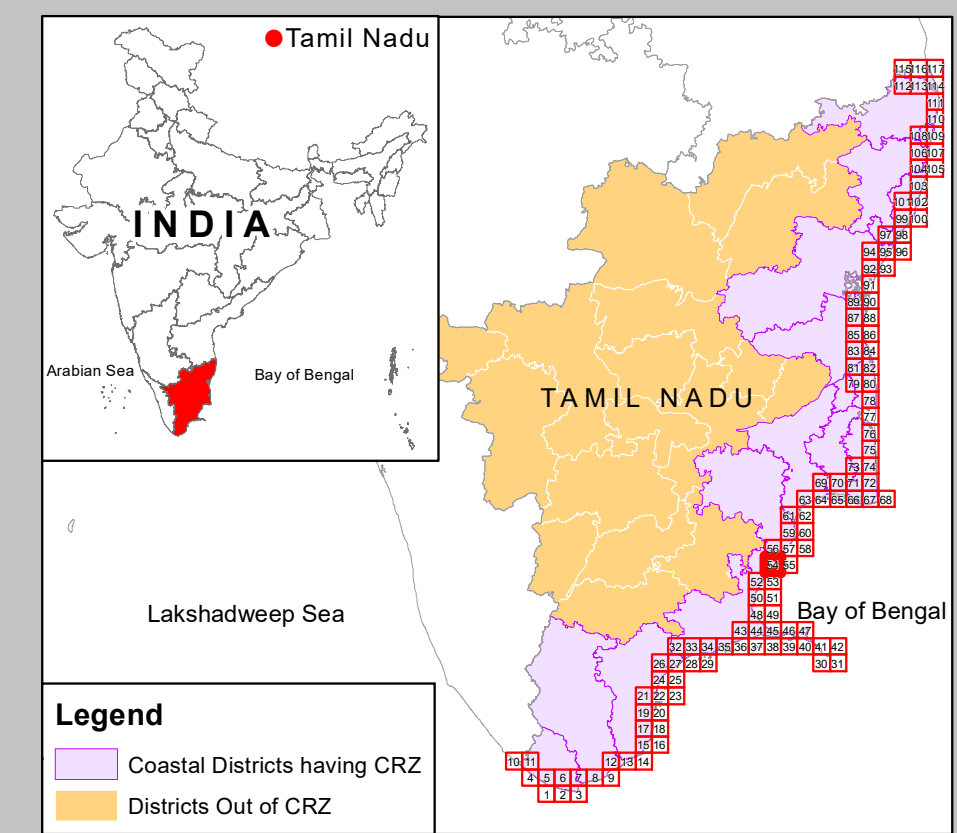
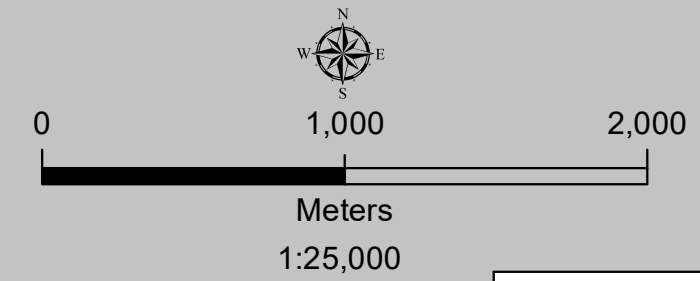
Ramanathapuram & Pudukkottai Districts

Edition: June, 2023

Sheet No: C 44 N 1 / SW

Projection :- UTM Datum :- WGS 1984

Map No : TN 54



Legend

- Lighthouse
- Fish Landing Centre
- Fishing Harbour
- Fishing Port
- Helipad
- Health Center/Hospital
- Multipurpose Evacuation Centre
- Educational Institution
- Road
- Railway Line
- Seawall
- High Tide Line
- Low Tide Line
- Port Limit
- Fish Drying or Boat Parking Area
- Fisherman Settlement
- Fishing Wards
- Breakwater/Jetty/Groyne
- Survey Plots
- Village Boundary
- Municipal/Urban Boundary
- Taluk Boundary
- District Boundary

CRZ Lines & Boundary

- Hazard Line
- 20m CRZ Line for Island*
- 50m CRZ Line - CRZ IIIA (NDZ)
- 200m CRZ Line - CRZ IIIB (NDZ)
- CVCA Boundary
- CRZ Boundary
- Sand Dune Beyond CRZ Boundary (500m Line, 50m Line for Bay, 50m or width of the creek whichever is less along the tidal influenced water bodies and 50m Mangrove Buffer Zone)

CRZ CATEGORY

- CRZ - I**
 - Eco Sensitive Zone - CRZ IA
 - CRZ - IA
 - 50 m Mangrove Buffer Zone - CRZ IA
- CRZ - II**
 - CRZ - IB
- CRZ - III**
 - No Development Zone
 - 50 to 500m from HTL - CRZ IIIA
 - 200 to 500m from HTL - CRZ IIIB
- CRZ - IV**
 - CRZ - IVB
 - CRZ - IVA (Upto 12 NM)

ABBREVIATIONS

- CRZ : Coastal Regulation Zone
- NDZ : No Development Zone
- CVCA : Critically Vulnerable Coastal Areas

NOTE

- CRZ - I areas are further classified on Land Use map and CZMP map shall be used along with Coastal Land Use map.
- 50m Mangrove Buffer Zone is provided for both Government land and Private land.
- ISLANDS: 20m CRZ Line from HTL is valid only after approval of IMP of the particular island. IMPs of the particular island shall be prepared by concerned States/UTs and got approved by MoEF&CC.

Updated During 2019 - 2022

PREPARED AS PER COASTAL REGULATION ZONE NOTIFICATION, 2019

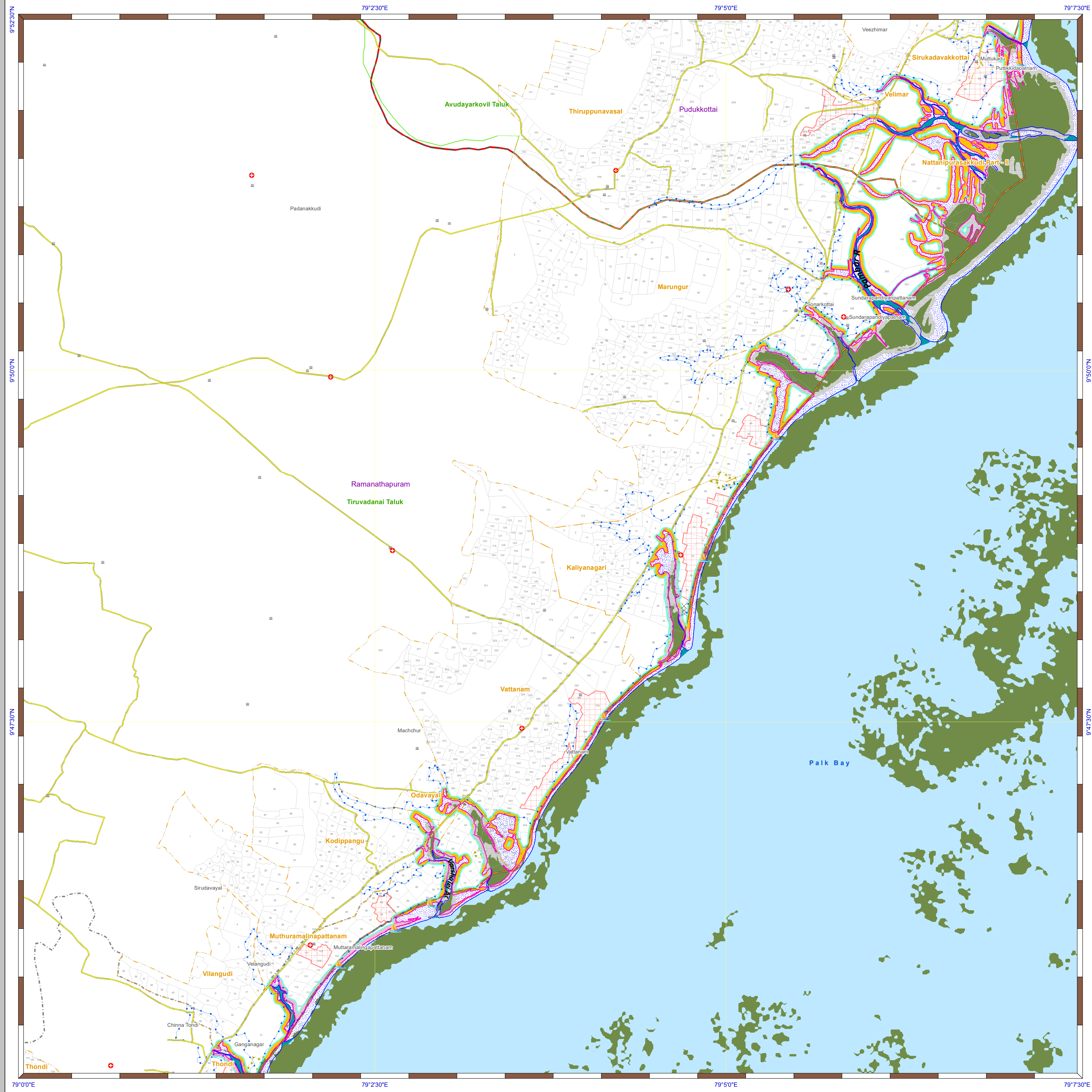
Prepared by

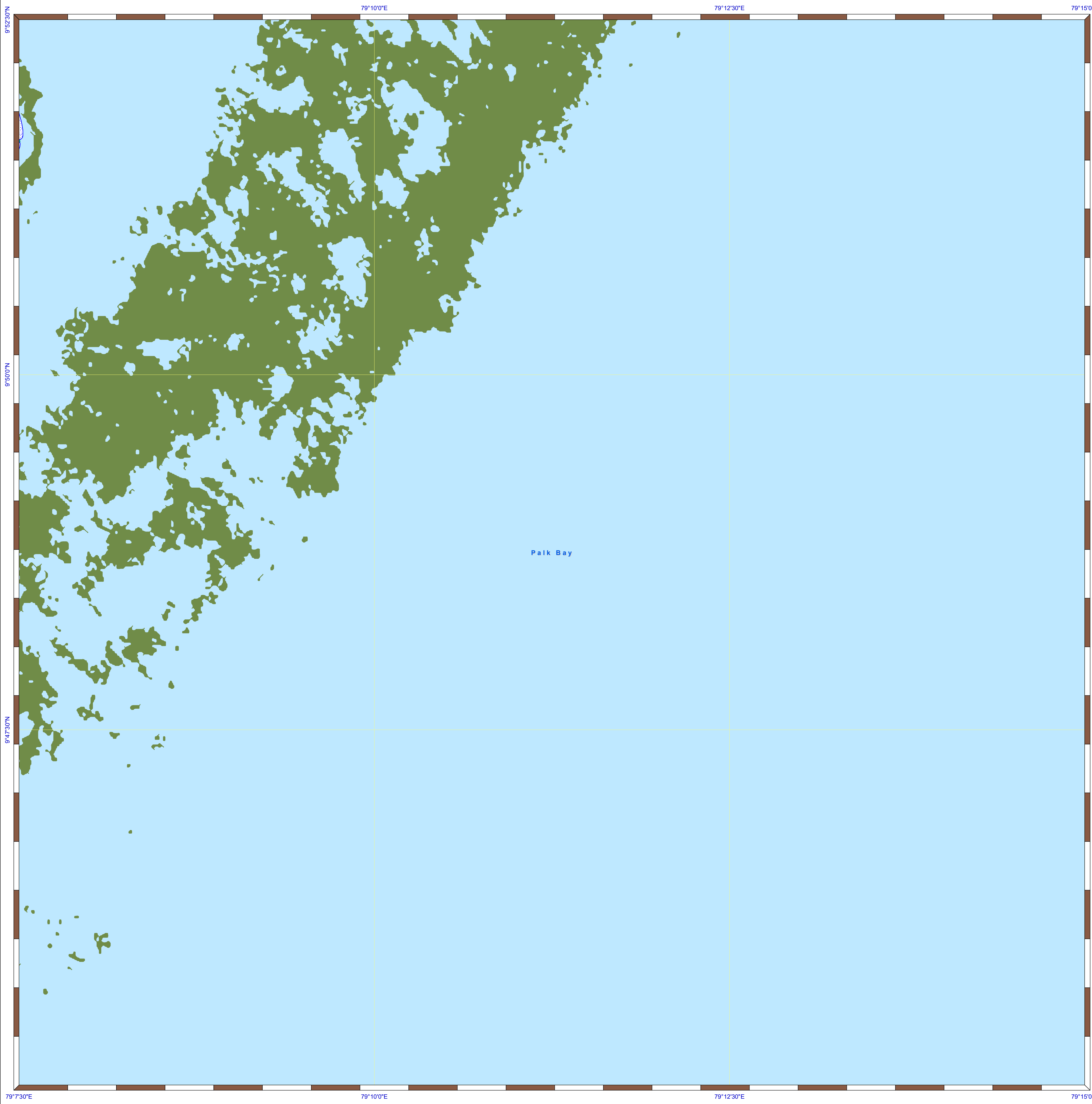


National Centre for Sustainable Coastal Management
(Ministry of Environment, Forest & Climate Change)
Chennai - 600 025



Department of Environment and Climate Change
Government of Tamil Nadu





DRAFT COASTAL ZONE MANAGEMENT PLAN TAMIL NADU

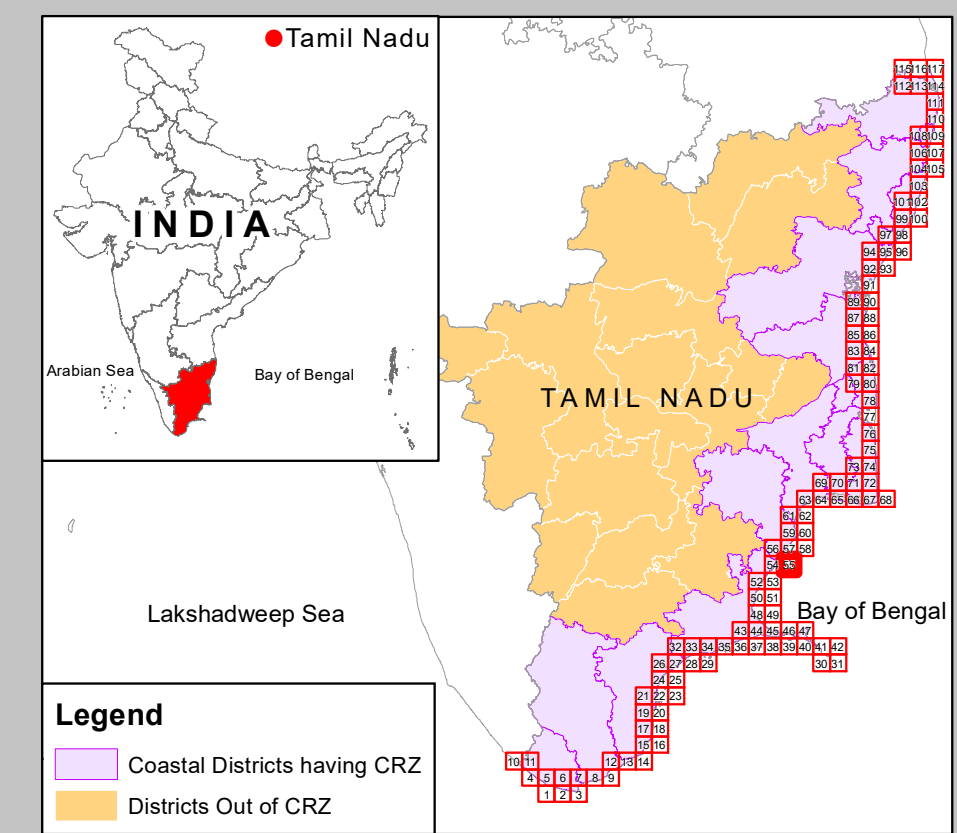
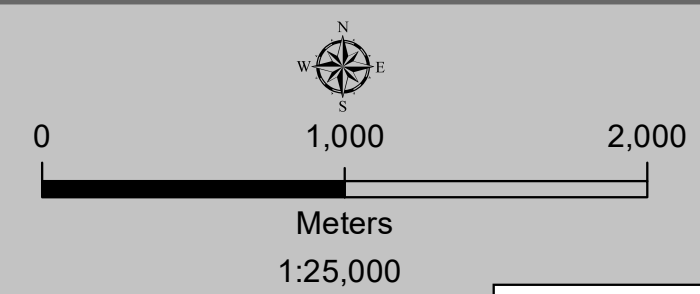
Ramanathapuram & Pudukkottai Districts

Edition: June, 2023

Sheet No: C 44 N 1/SE

Projection :- UTM Datum :- WGS 1984

Map No : TN 55



Legend

- Tamil Nadu
- INDIA
- TAMIL NADU
- Lakshadweep Sea
- Bay of Bengal
- Coastal Districts having CRZ
- Districts Out of CRZ

Legend

- Lighthouse
- Fish Landing Centre
- Fishing Harbour
- Fishing Port
- Helipad
- Health Center/Hospital
- Multipurpose Evacuation Centre
- Educational Institution
- Road
- Railway Line
- Seawall
- High Tide Line
- Low Tide Line
- Port Limit
- Fish Drying or Boat Parking Area
- Fisherman Settlement
- Fishing Wards
- Breakwater/Jetty/Groyne
- Survey Plots
- Village Boundary
- Municipal/Urban Boundary
- Taluk Boundary
- District Boundary

CRZ Lines & Boundary

- Hazard Line
- 20m CRZ Line for Island*
- 50m CRZ Line - CRZ IIIA (NDZ)
- 200m CRZ Line - CRZ IIIB (NDZ)
- CVCA Boundary
- CRZ Boundary
- Sand Dune Beyond CRZ Boundary (500m Line, 50m Line for Bay, 50m or width of the creek whichever is less along the tidal influenced water bodies and 50m Mangrove Buffer Zone)

CRZ CATEGORY

- CRZ - I**
 - Eco Sensitive Zone - CRZ IA
 - CRZ - IA
 - 50 m Mangrove Buffer Zone - CRZ IA
 - CRZ - IB
- CRZ - II**
 - CRZ - II
- CRZ - III**
 - No Development Zone
 - 50 to 500m from HTL - CRZ IIIA
 - 200 to 500m from HTL - CRZ IIIB
- CRZ - IV**
 - CRZ - IVB
 - CRZ - IVA (Upto 12 NM)

ABBREVIATIONS

- CRZ : Coastal Regulation Zone
- NDZ : No Development Zone
- CVCA : Critically Vulnerable Coastal Areas

NOTE

- 1) CRZ - I areas are further classified on Land Use map and CZMP map shall be used along with Coastal Land Use map.
- 2) 50m Mangrove Buffer Zone is provided for both Government land and Private land
- 3) ISLANDS: 20m CRZ Line from HTL is valid only after approval of IMP of the particular island. IMPs of the particular island shall be prepared by concerned States/UTs and got approved by MoEF&CC.

DATA SOURCE

- I) National Centre for Sustainable Coastal Management
 - 1) HTL, LTL 2) CVCA 3) CRZ - IA 4) Infrastructure Facilities such as Lighthouse, Road, Seawall, Breakwater/Jetty/Groyne.
- II) Survey of India
 - 1) Hazard Line
- III) Tamil Nadu State Coastal Zone Management Authority
 - 1) Administrative Boundaries,
 - 2) Infrastructure Facilities such as Health Center/Hospital, Helipad, Multipurpose Evacuation Centre, Education Institution, Fish Landing Centre, Fishing Harbour, Fish Drying or Boat Parking Area,
 - 3) Fisherman Settlement & Fishing ward,
 - 4) Port Limit etc.

Updated During 2019 - 2022

PREPARED AS PER COASTAL REGULATION ZONE NOTIFICATION, 2019

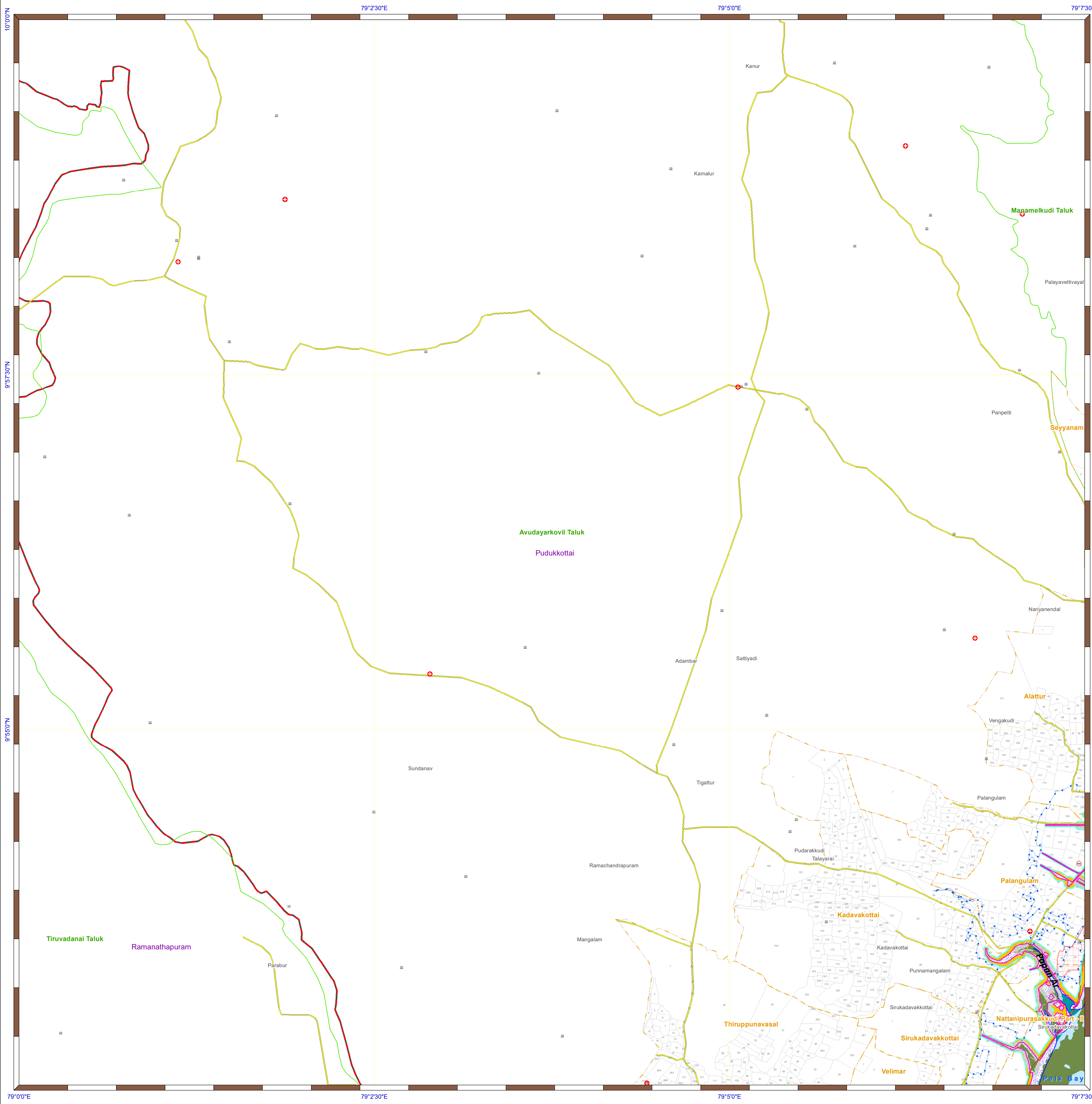
Prepared by



National Centre for Sustainable Coastal Management
(Ministry of Environment, Forest & Climate Change)
Chennai - 600 025



Department of Environment and Climate Change
Government of Tamil Nadu



DRAFT COASTAL ZONE MANAGEMENT PLAN TAMIL NADU

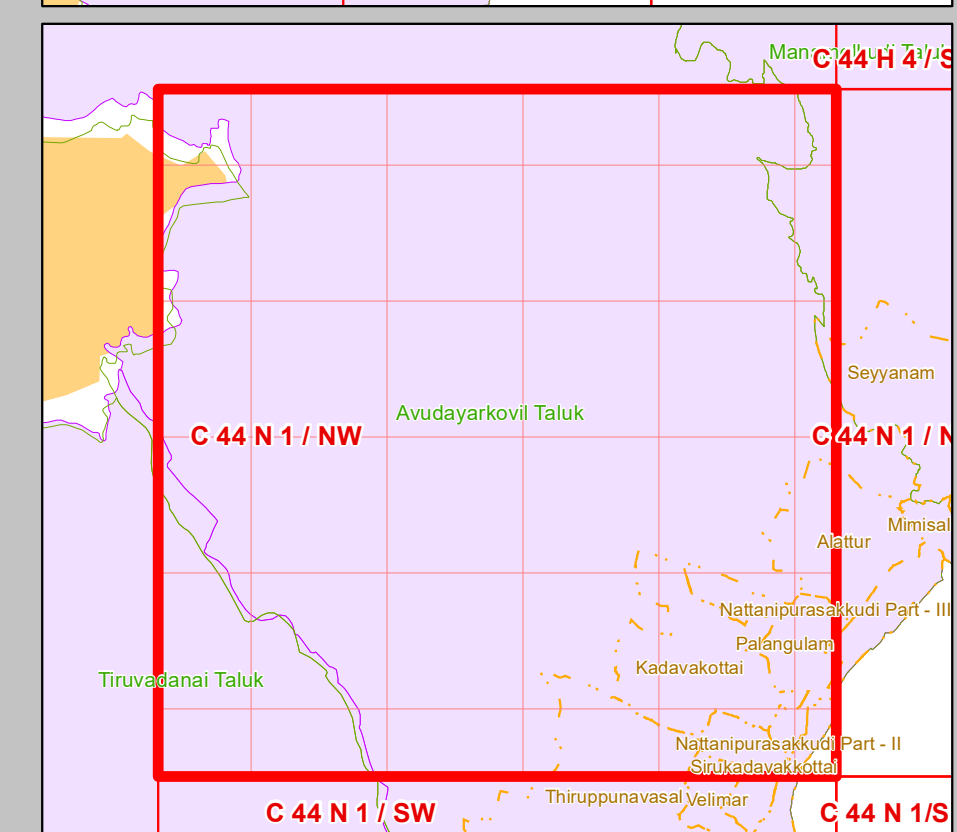
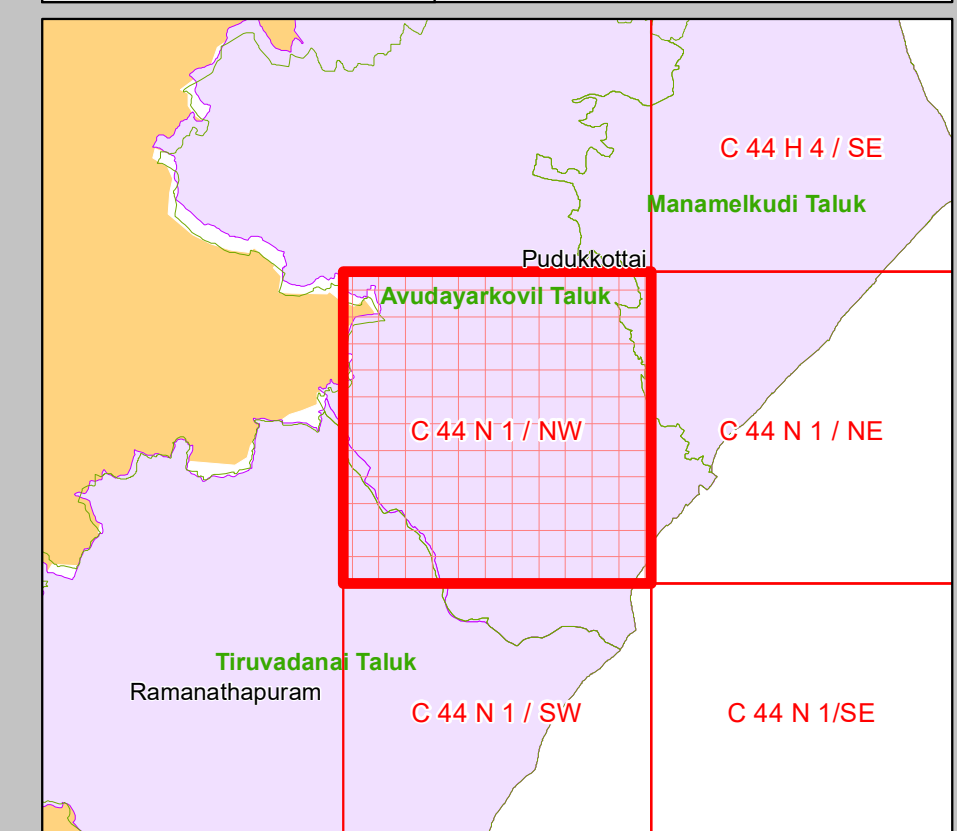
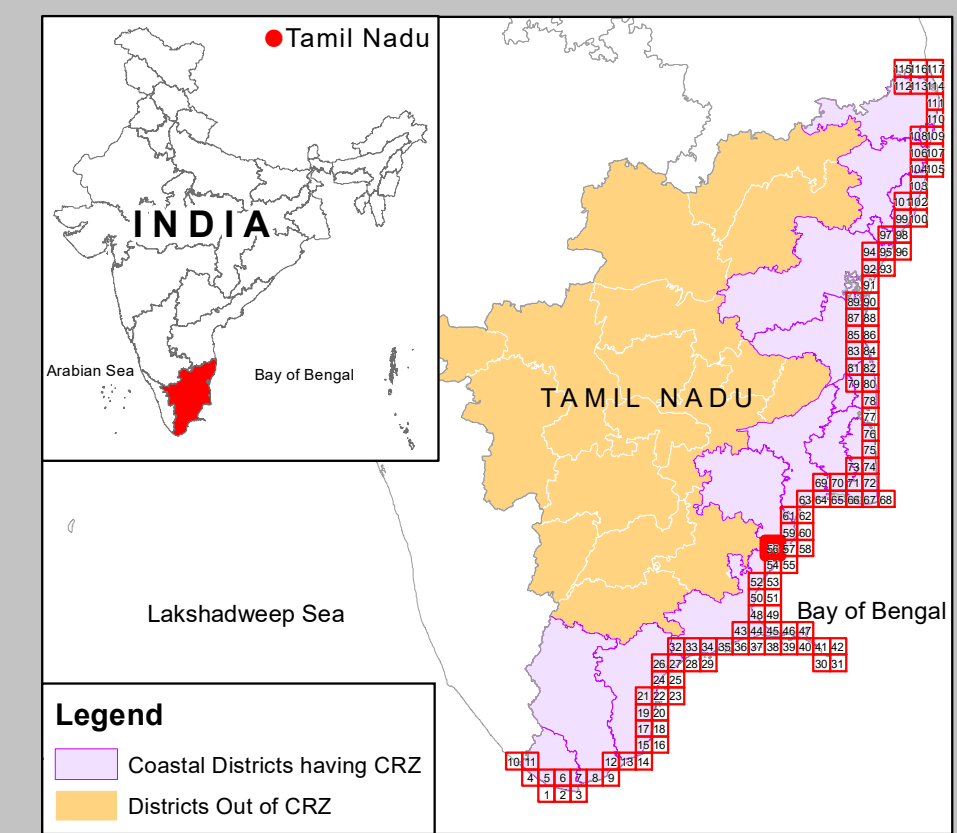
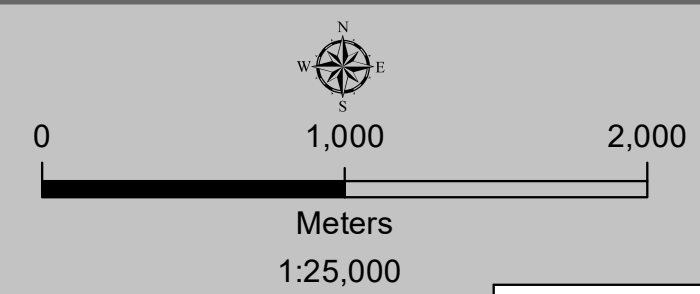
Ramanathapuram & Pudukkottai Districts

Edition: June, 2023

Sheet No: C 44 N 1 / NW

Projection :- UTM Datum :- WGS 1984

Map No : TN 56



Legend

- Lighthouse
- Fish Landing Centre
- Fishing Harbour
- Fishing Port
- Helipad
- Health Center/Hospital
- Multipurpose Evacuation Centre
- Educational Institution
- Road
- Railway Line
- Seawall
- High Tide Line
- Low Tide Line
- Port Limit
- Fish Drying or Boat Parking Area
- Fisherman Settlement
- Fishing Ward
- Breakwater/Jetty/Groyne
- Survey Plots
- Village Boundary
- Municipal/Urban Boundary
- Taluk Boundary
- District Boundary

CRZ Lines & Boundary

- Hazard Line
- 20m CRZ Line for Island*
- 50m CRZ Line - CRZ IIIA (NDZ)
- 200m CRZ Line - CRZ IIIB (NDZ)
- CVCA Boundary
- CRZ Boundary
- Sand Dune Beyond CRZ Boundary (500m Line, 50m Line for Bay, 50m or width of the creek whichever is less along the tidal influenced water bodies and 50m Mangrove Buffer Zone)

CRZ CATEGORY

- CRZ - I**
 - Eco Sensitive Zone - CRZ IA
 - CRZ - IA
 - 50 m Mangrove Buffer Zone - CRZ IA
 - CRZ - IB
- CRZ - II**
 - CRZ - II
- CRZ - III**
 - No Development Zone
 - 50 to 500m from HTL - CRZ IIIA
 - 200 to 500m from HTL - CRZ IIIB
- CRZ - IV**
 - CRZ - IVB
 - CRZ - IVA (Upto 12 NM)

ABBREVIATIONS

- CRZ : Coastal Regulation Zone
- NDZ : No Development Zone
- CVCA : Critically Vulnerable Coastal Areas

NOTE


- 1) CRZ - I areas are further classified on Land Use map and CZMP map shall be used along with Coastal Land Use map.
- 2) 50m Mangrove Buffer Zone is provided for both Government land and Private land
- 3*) ISLANDS: 20m CRZ Line from HTL is valid only after approval of IMP of the particular island. IMPs of the particular island shall be prepared by concerned States/UTs and got approved by MoEF&CC.

Updated During 2019 - 2022


DATA SOURCE
 I) National Centre for Sustainable Coastal Management
 1) HTL, LTL 2) CVCA 3) CRZ - IA 4) Infrastructure Facilities such as Lighthouse, Road, Seawall, Breakwater/Jetty/Groyne.
 II) Survey of India
 1) Hazard Line
 III) Tamil Nadu State Coastal Zone Management Authority
 1) Administrative Boundaries,
 2) Infrastructure Facilities such as Health Center/Hospital, Helipad, Multipurpose Evacuation Centre, Education Institution, Fishing Harbour, Fish Drying or Boat Parking Area,
 3) Fisherman Settlement & Fishing ward,
 5) Port Limit etc.

PREPARED AS PER COASTAL REGULATION ZONE NOTIFICATION, 2019

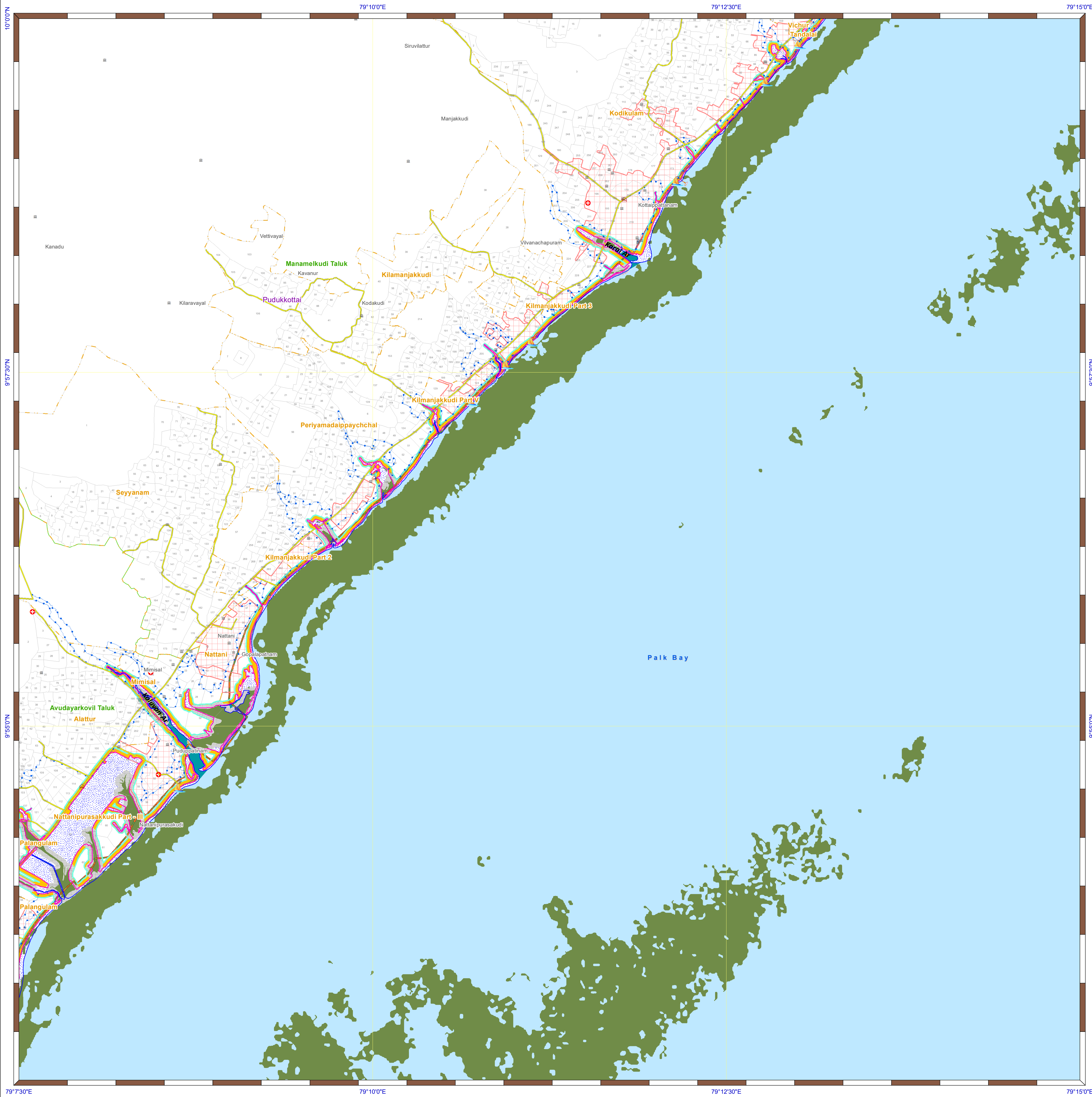
Prepared by



National Centre for Sustainable Coastal Management
 (Ministry of Environment, Forest & Climate Change)
 Chennai - 600 025



Department of Environment and Climate Change
 Government of Tamil Nadu



DRAFT COASTAL ZONE MANAGEMENT PLAN TAMIL NADU

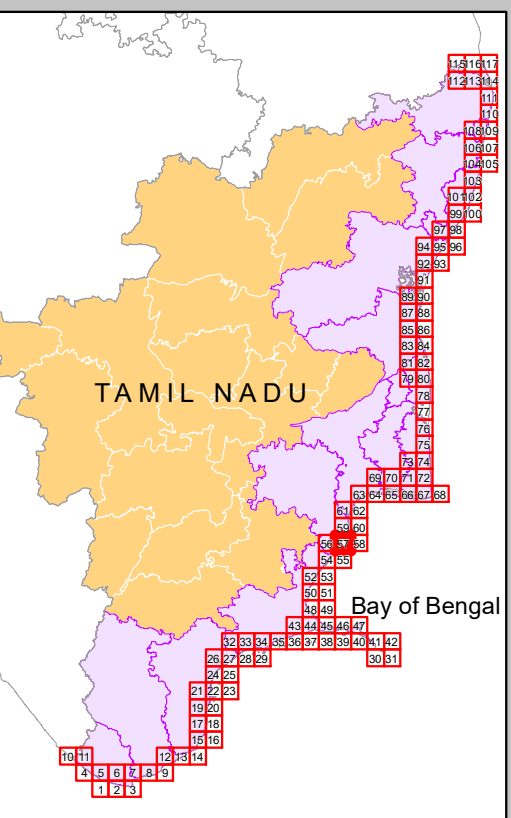
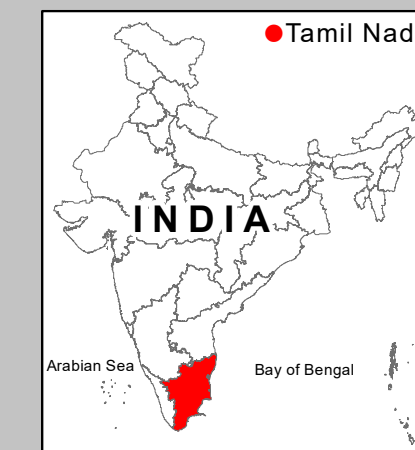
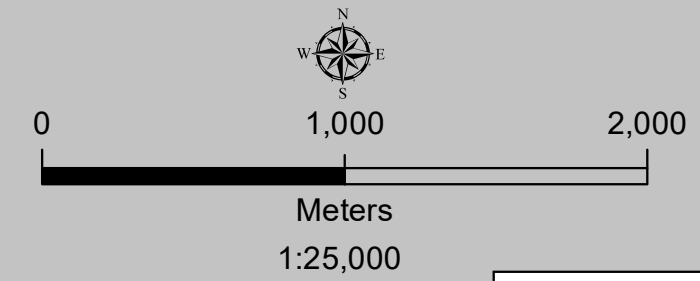
Pudukkottai District

Edition: June, 2023

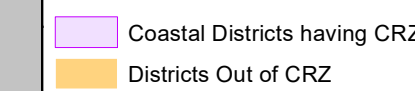
Sheet No: C 44 N 1 / NE

Projection :- UTM Datum :- WGS 1984

Map No : TN 57



Legend



Legend

- Lighthouse
- Fish Landing Centre
- Fishing Harbour
- Fishing Port
- Helipad
- Health Center/Hospital
- Multipurpose Evacuation Centre
- Educational Institution
- Road
- Railway Line
- Seawall
- High Tide Line
- Low Tide Line
- Port Limit
- Fish Drying or Boat Parking Area
- Fisherman Settlement
- Fishing Wards
- Breakwater/Jetty/Groyne
- Survey Plots
- Village Boundary
- Municipal/Urban Boundary
- Taluk Boundary
- District Boundary

CRZ Lines & Boundary

- Hazard Line
- 20m CRZ Line for Island*
- 50m CRZ Line - CRZ IIIA (NDZ)
- 200m CRZ Line - CRZ IIIB (NDZ)
- CVCA Boundary
- CRZ Boundary
- Sand Dune Beyond CRZ Boundary (500m Line, 50m Line for Bay, 50m or width of the creek whichever is less along the tidal influenced water bodies and 50m Mangrove Buffer Zone)

CRZ CATEGORY

- CRZ - I**
 - Eco Sensitive Zone - CRZ IA
 - CRZ - IA
 - 50 m Mangrove Buffer Zone - CRZ IA
 - CRZ - IB
- CRZ - II**
 - CRZ - II
- CRZ - III**
 - No Development Zone
 - 50 to 500m from HTL - CRZ IIIA
 - 200 to 500m from HTL - CRZ IIIB
- CRZ - IV**
 - CRZ - IVB
 - CRZ - IVA (Upto 12 NM)

ABBREVIATIONS

- CRZ : Coastal Regulation Zone
- NDZ : No Development Zone
- CVCA : Critically Vulnerable Coastal Areas

NOTE

- 1) CRZ - I areas are further classified on Land Use map and CZMP map shall be used along with Coastal Land Use map.
- 2) 50m Mangrove Buffer Zone is provided for both Government land and Private land.
- 3) ISLANDS: 20m CRZ Line from HTL is valid only after approval of IMP of the particular island. IMPs of the particular island shall be prepared by concerned States/UTs and got approved by MoEF&CC.

DATA SOURCE

- I) National Centre for Sustainable Coastal Management
 - 1) HTL, LTL 2) CVCA 3) CRZ - IA 4) Infrastructure Facilities such as Lighthouse, Road, Seawall, Breakwater/Jetty/Groyne.
- II) Survey of India
 - 1) Hazard Line
- III) Tamil Nadu State Coastal Zone Management Authority
 - 1) Administrative Boundaries,
 - 2) Infrastructure Facilities such as Health Center/Hospital, Helipad, Multipurpose Evacuation Centre, Education Institution, Fish Landing Centre, Fishing Harbour, Fish Drying or Boat Parking Area,
 - 3) Fisherman Settlement & Fishing ward,
 - 4) Port Limit etc.

Updated During 2019 - 2022

PREPARED AS PER COASTAL REGULATION ZONE NOTIFICATION, 2019

Prepared by



National Centre for Sustainable Coastal Management
(Ministry of Environment, Forest & Climate Change)
Chennai - 600 025



Department of Environment and Climate Change
Government of Tamil Nadu

DRAFT COASTAL ZONE MANAGEMENT PLAN TAMIL NADU

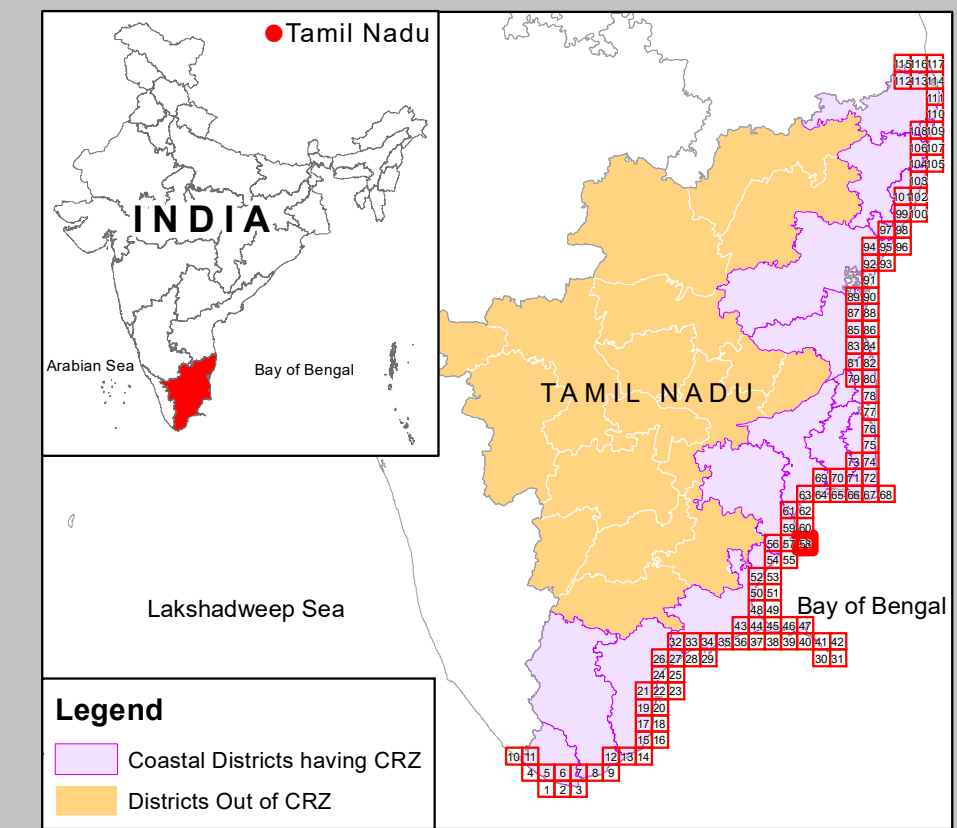
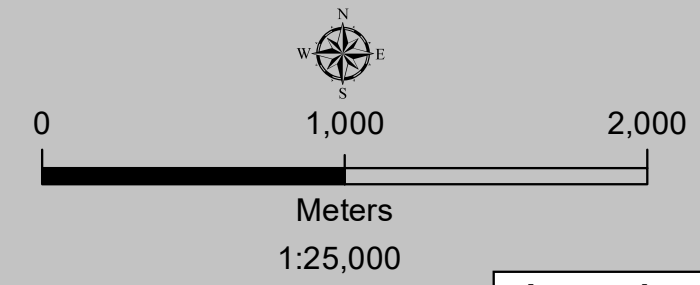
Pudukkottai District

Edition: June, 2023

Sheet No: C 44 N 5/NW

Projection :- UTM Datum :- WGS 1984

Map No : TN 58



Legend

- Coastal Districts having CRZ
- Districts Out of CRZ

Legend

- Lighthouse
- Fish Landing Centre
- Fishing Harbour
- Fishing Port
- Helipad
- Health Center/Hospital
- Multipurpose Evacuation Centre
- Educational Institution
- Road
- Railway Line
- Seawall
- High Tide Line
- Low Tide Line
- Port Limit
- Fish Drying or Boat Parking Area
- Fisherman Settlement
- Fishing Wards
- Breakwater/Jetty/Groyne
- Survey Plots
- Village Boundary
- Municipal/Urban Boundary
- Taluk Boundary
- District Boundary

CRZ Lines & Boundary

- Hazard Line
- 20m CRZ Line for Island*
- 50m CRZ Line - CRZ IIIA (NDZ)
- 200m CRZ Line - CRZ IIIB (NDZ)
- CVCA Boundary
- CRZ Boundary
- Sand Dune Beyond CRZ Boundary (500m Line, 50m Line for Bay, 50m or width of the creek whichever is less along the tidal influenced water bodies and 50m Mangrove Buffer Zone)

CRZ CATEGORY

CRZ - I

- Eco Sensitive Zone - CRZ IA
- CRZ - IA
- 50 m Mangrove Buffer Zone - CRZ IA
- CRZ - IB

CRZ - II

- CRZ - II

CRZ - III

- No Development Zone
- 50 to 500m from HTL - CRZ IIIA
- 200 to 500m from HTL - CRZ IIIB

CRZ - IV

- CRZ - IVB
- CRZ - IVA (Upto 12 NM)

ABBREVIATIONS

- CRZ : Coastal Regulation Zone
- NDZ : No Development Zone
- CVCA : Critically Vulnerable Coastal Areas

NOTE

- CRZ - I areas are further classified on Land Use map and CZMP map shall be used along with Coastal Land Use map.
- 50m Mangrove Buffer Zone is provided for both Government land and Private land
- ISLANDS: 20m CRZ Line from HTL is valid only after approval of IMP of the particular island. IMPs of the particular island shall be prepared by concerned States/UTs and got approved by MoEF&CC.

Updated During 2019 - 2022

PREPARED AS PER COASTAL REGULATION ZONE NOTIFICATION, 2019

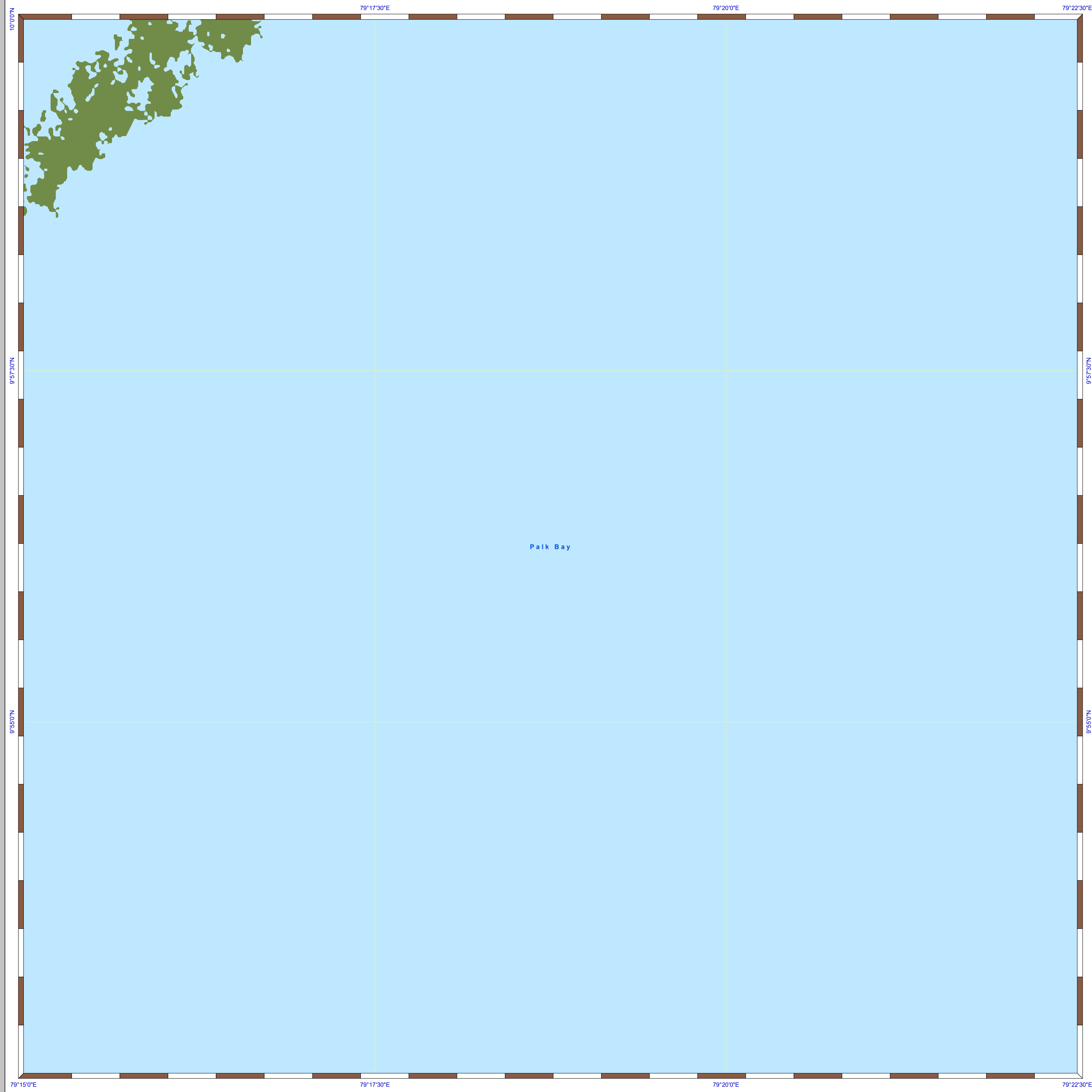
Prepared by



National Centre for Sustainable Coastal Management
(Ministry of Environment, Forest & Climate Change)
Chennai - 600 025



Department of Environment and Climate Change
Government of Tamil Nadu



DATA SOURCE

- National Centre for Sustainable Coastal Management
 - HTL, LTL 2) CVCA 3) CRZ - IA 4) Infrastructure Facilities such as Lighthouse, Road, Seawall, Breakwater/Jetty/Groyne.
- Survey of India
 - Hazard Line
- Tamil Nadu State Coastal Zone Management Authority
 - Administrative Boundaries,
 - Infrastructure Facilities such as Health Center/Hospital, Helipad, Multipurpose Evacuation Centre, Education Institution, Fish Landing Centre, Fishing Harbour,
 - Fish Drying or Boat Parking Area,
 - Fisherman Settlement & Fishing ward,
 - Port Limit etc.

DRAFT COASTAL ZONE MANAGEMENT PLAN TAMIL NADU

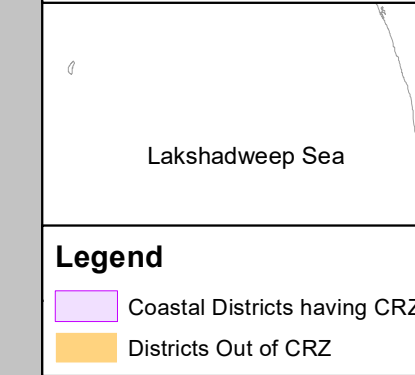
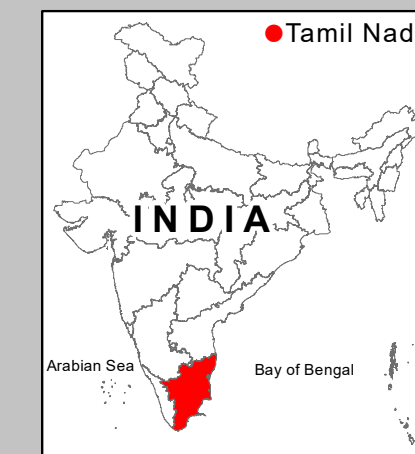
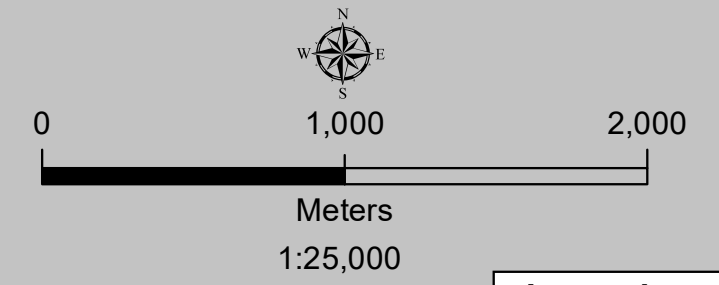
Pudukottai District

Edition: June, 2023

Sheet No: C 44 H 4 / SE

Projection :- UTM Datum :- WGS 1984

Map No : TN 59



Legend

- Coastal Districts having CRZ
- Districts Out of CRZ

Legend

- Lighthouse
- Fish Landing Centre
- Fishing Harbour
- Fishing Port
- Helipad
- Health Center/Hospital
- Multipurpose Evacuation Centre
- Educational Institution
- Road
- Railway Line
- Seawall
- High Tide Line
- Low Tide Line
- Port Limit
- Fish Drying or Boat Parking Area
- Fisherman Settlement
- Fishing Wards
- Breakwater/Jetty/Groyne
- Survey Plots
- Municipal/Urban Boundary
- Taluk Boundary
- District Boundary

CRZ Lines & Boundary

- Hazard Line
- 20m CRZ Line for Island*
- 50m CRZ Line - CRZ IIIA (NDZ)
- 200m CRZ Line - CRZ IIIB (NDZ)
- CVCA Boundary
- CRZ Boundary
- Sand Dune Beyond CRZ Boundary (500m Line, 50m Line for Bay, 50m or width of the creek whichever is less along the tidal influenced water bodies and 50m Mangrove Buffer Zone)

CRZ CATEGORY

CRZ - I

- Eco Sensitive Zone - CRZ IA
- CRZ - IA
- 50 m Mangrove Buffer Zone - CRZ IA
- CRZ - IB

CRZ - II

- CRZ - II

CRZ - III

- No Development Zone
- 50 to 500m from HTL - CRZ IIIA
- 200 to 500m from HTL - CRZ IIIB

CRZ - IV

- CRZ - IVB
- CRZ - IVA (Upto 12 NM)

ABBREVIATIONS

- CRZ : Coastal Regulation Zone
- NDZ : No Development Zone
- CVCA : Critically Vulnerable Coastal Areas

NOTE

- CRZ - I areas are further classified on Land Use map and CZMP map shall be used along with Coastal Land Use map.
- 50m Mangrove Buffer Zone is provided for both Government land and Private land.
- ISLANDS: 20m CRZ Line from HTL is valid only after approval of IMP of the particular island. IMPs of the particular island shall be prepared by concerned States/UTs and got approved by MoEF&CC.

Updated During 2019 - 2022

PREPARED AS PER COASTAL REGULATION ZONE NOTIFICATION, 2019

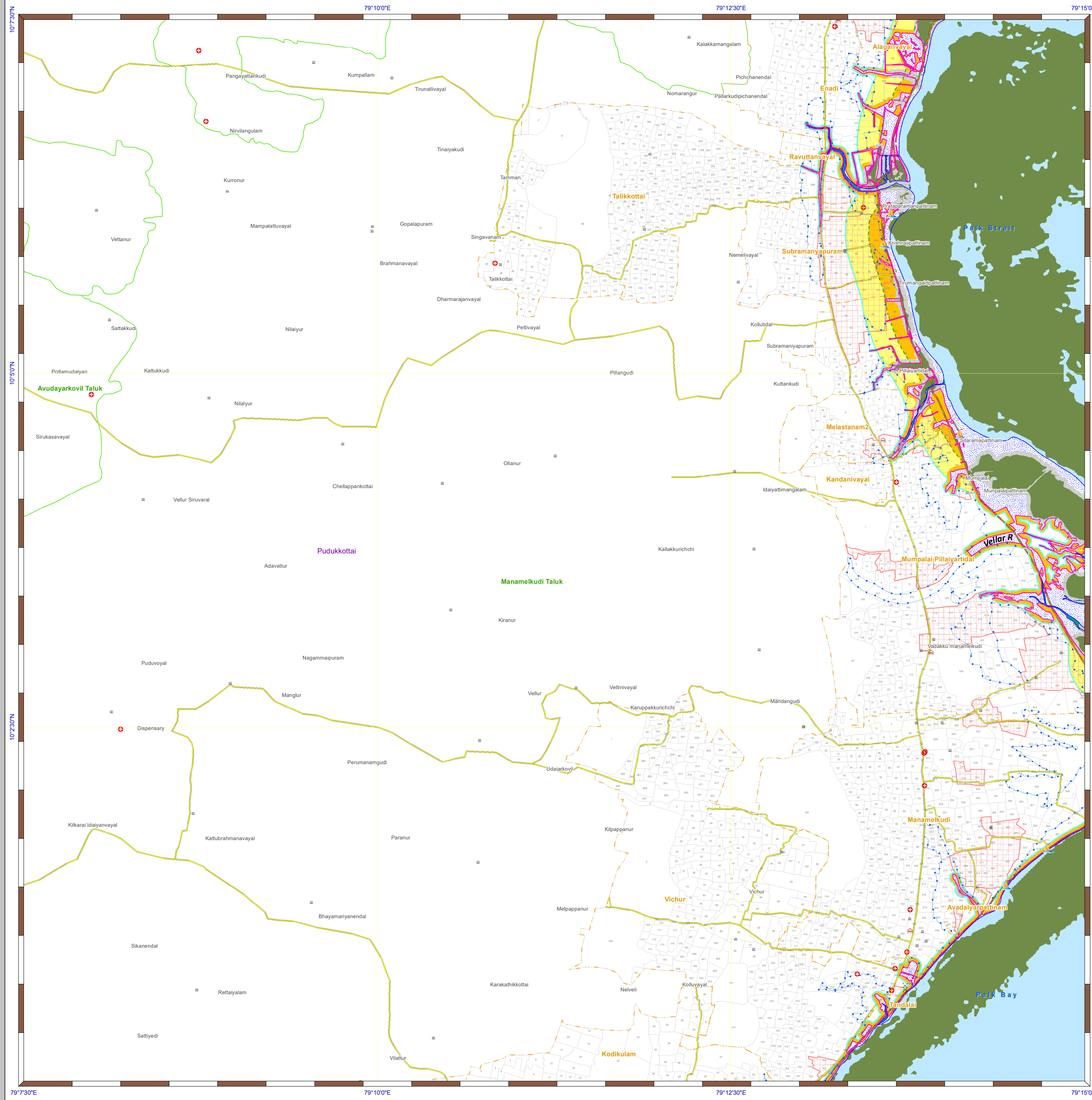
Prepared by



National Centre for Sustainable Coastal Management
(Ministry of Environment, Forest & Climate Change)
Chennai - 600 025



Department of Environment and Climate Change
Government of Tamil Nadu



DRAFT COASTAL ZONE MANAGEMENT PLAN TAMIL NADU

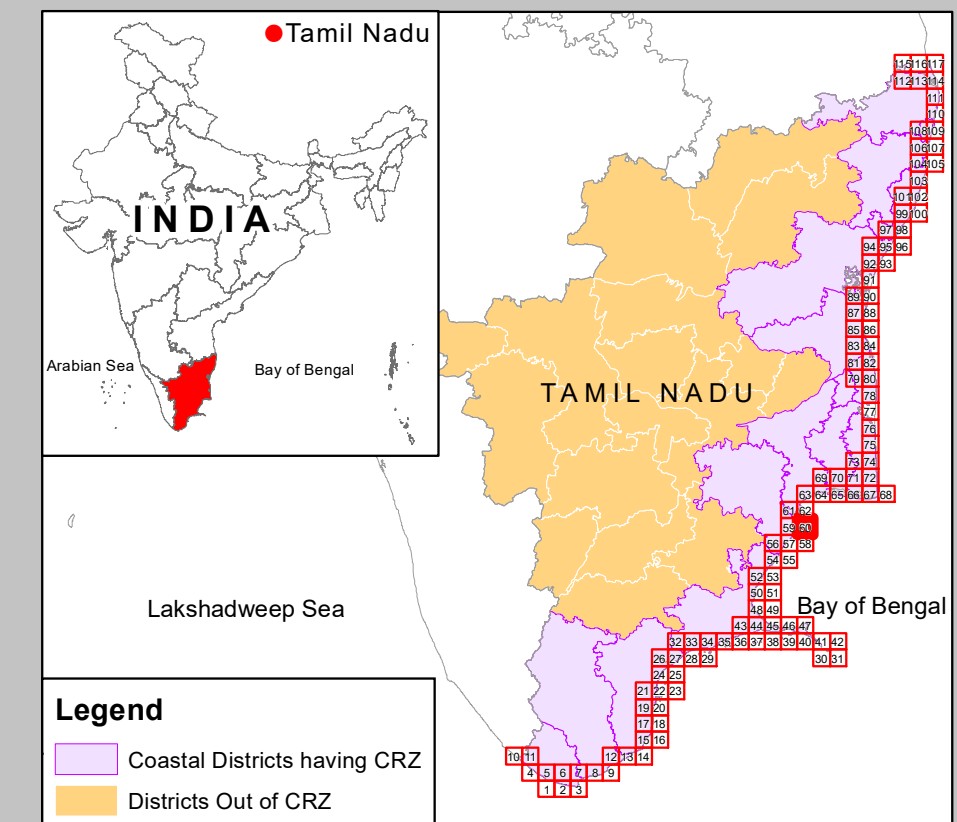
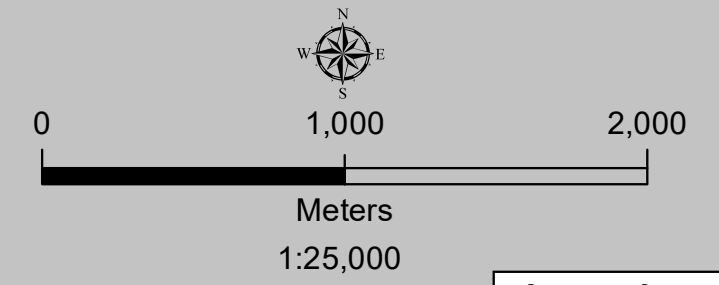
Pudukkottai District

Edition: June, 2023

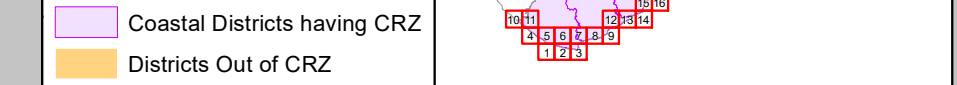
Sheet No: C 44 H 8 / SW

Projection :- UTM Datum :- WGS 1984

Map No : TN 60



Legend



Legend

- Lighthouse
- Fish Landing Centre
- Fishing Harbour
- Fishing Port
- Helipad
- Health Center/Hospital
- Multipurpose Evacuation Centre
- Educational Institution
- Road
- Railway Line
- Seawall
- High Tide Line
- Low Tide Line
- Port Limit
- Fish Drying or Boat Parking Area
- Fisherman Settlement
- Fishing Wards
- Breakwater/Jetty/Groyne
- Survey Plots
- Village Boundary
- Municipal/Urban Boundary
- Taluk Boundary
- District Boundary

CRZ Lines & Boundary

- Hazard Line
- 20m CRZ Line for Island*
- 50m CRZ Line - CRZ IIIA (NDZ)
- 200m CRZ Line - CRZ IIIB (NDZ)
- CVCA Boundary
- CRZ Boundary
- Sand Dune Beyond CRZ Boundary (500m Line, 50m Line for Bay, 50m or width of the creek whichever is less along the tidal influenced water bodies and 50m Mangrove Buffer Zone)

CRZ CATEGORY

CRZ - I

- Eco Sensitive Zone - CRZ IA
- CRZ - IA
- 50 m Mangrove Buffer Zone - CRZ IA
- CRZ - IB

CRZ - II

- CRZ - II

CRZ - III

- No Development Zone
- 50 to 500m from HTL - CRZ IIIA
- 200 to 500m from HTL - CRZ IIIB

CRZ - IV

- CRZ - IVB
- CRZ - IVA (Upto 12 NM)

ABBREVIATIONS

- CRZ : Coastal Regulation Zone
- NDZ : No Development Zone
- CVCA : Critically Vulnerable Coastal Areas

NOTE

- CRZ - I areas are further classified on Land Use map and CZMP map shall be used along with Coastal Land Use map.
- 50m Mangrove Buffer Zone is provided for both Government land and Private land
- ISLANDS: 20m CRZ Line from HTL is valid only after approval of IMP of the particular island. IMPs of the particular island shall be prepared by concerned States/UTs and got approved by MoEF&CC.

Updated During 2019 - 2022

PREPARED AS PER COASTAL REGULATION ZONE NOTIFICATION, 2019

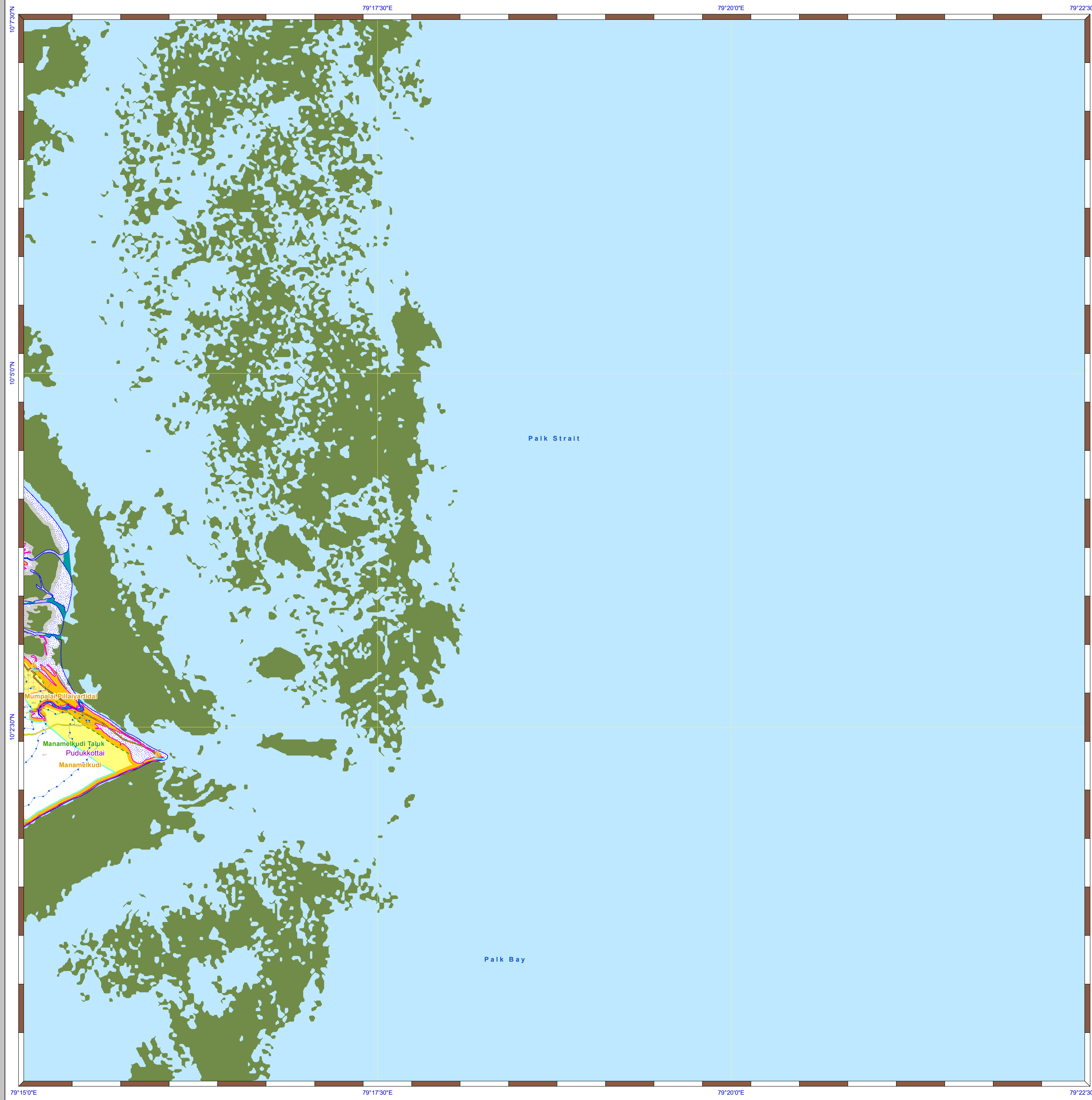
Prepared by

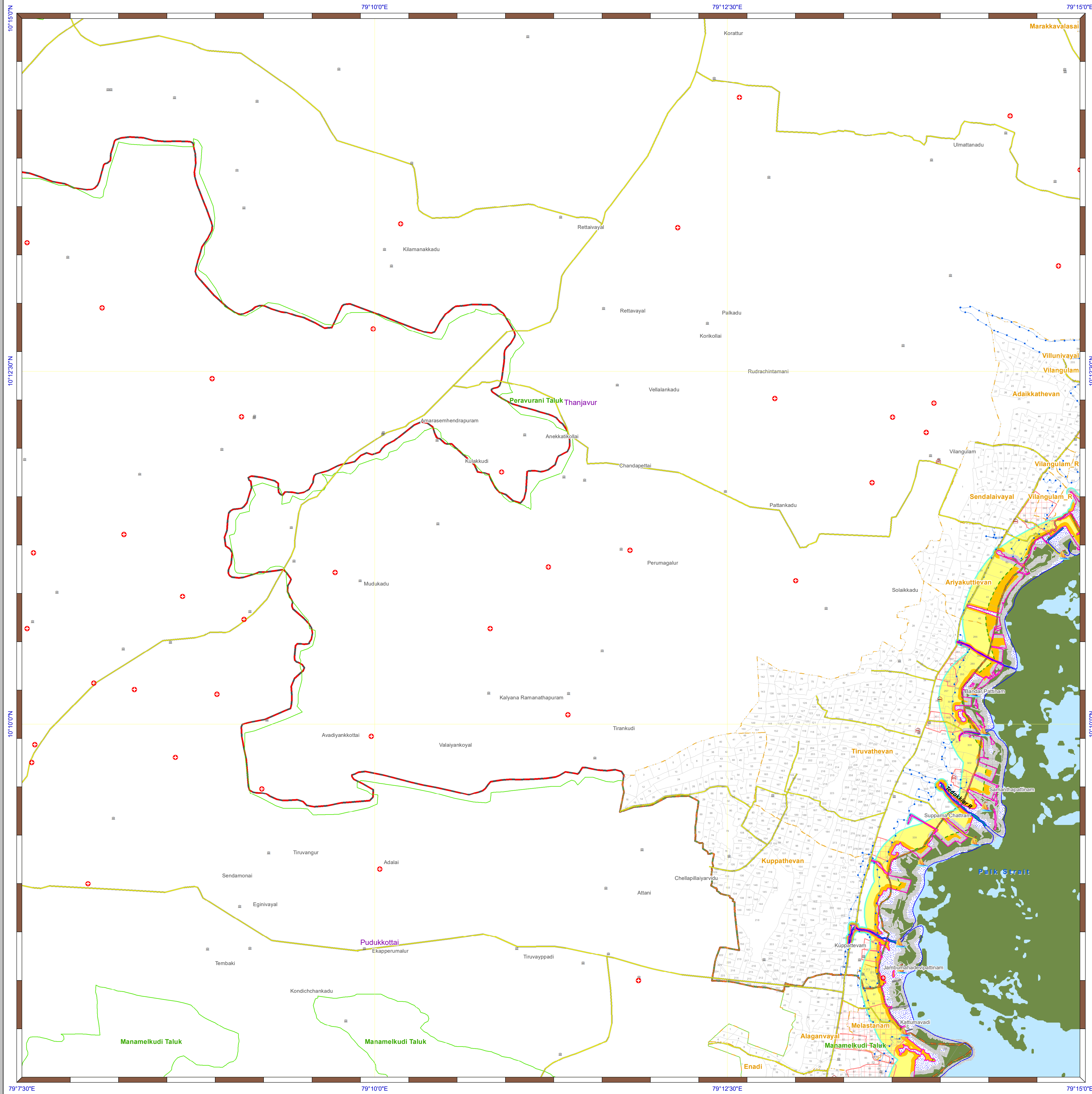


National Centre for Sustainable Coastal Management
(Ministry of Environment, Forest & Climate Change)
Chennai - 600 025



Department of Environment and Climate Change
Government of Tamil Nadu





DRAFT COASTAL ZONE MANAGEMENT PLAN TAMIL NADU

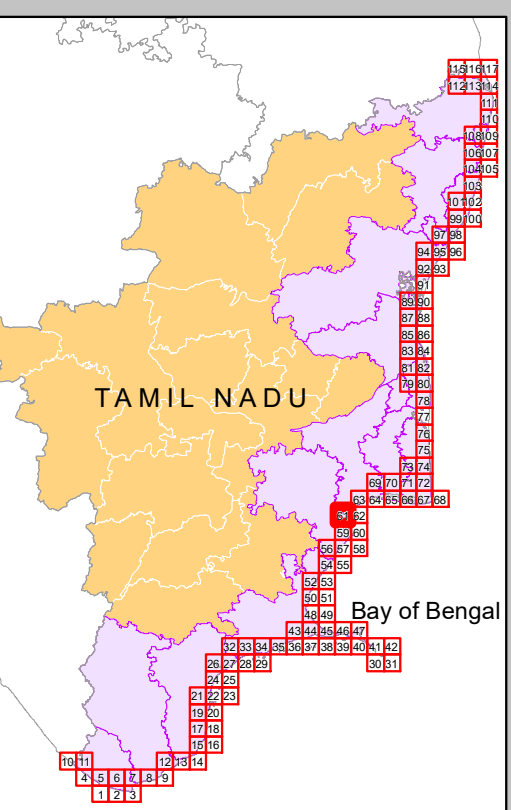
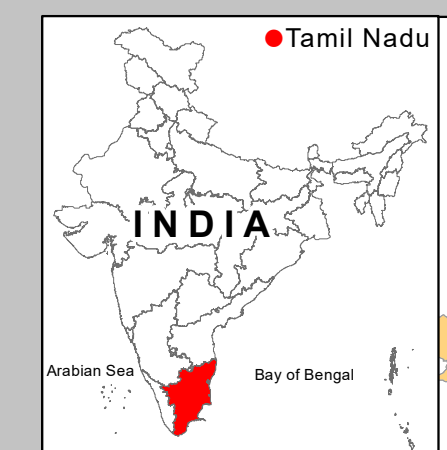
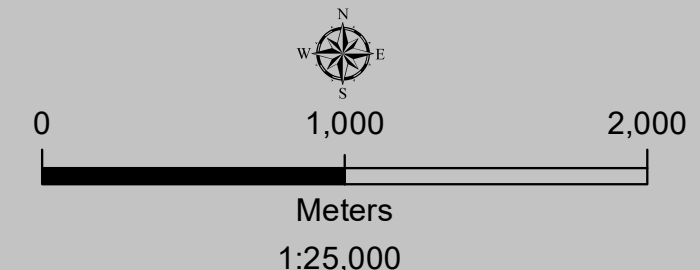
Pudukkottai & Thanjavur Districts

Edition: June, 2023

Sheet No: C 44 H 4 / NE

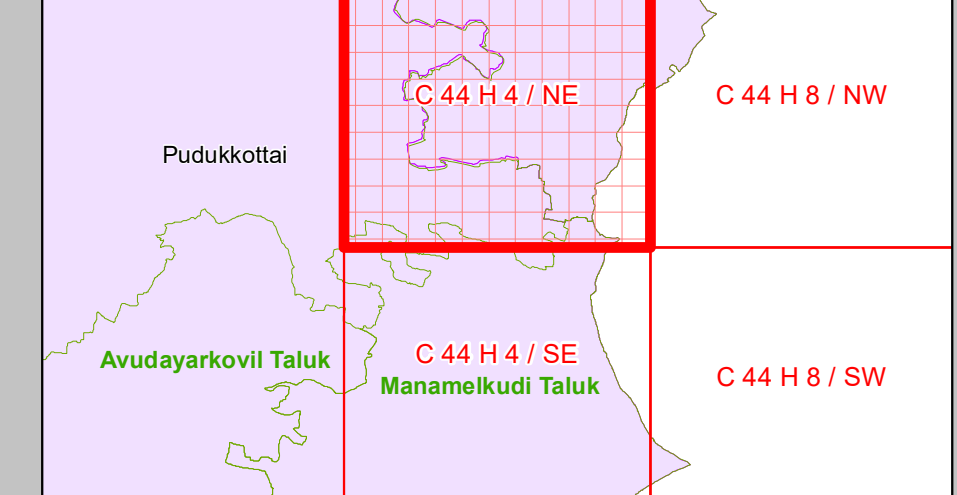
Projection :- UTM Datum :- WGS 1984

Map No : TN 61

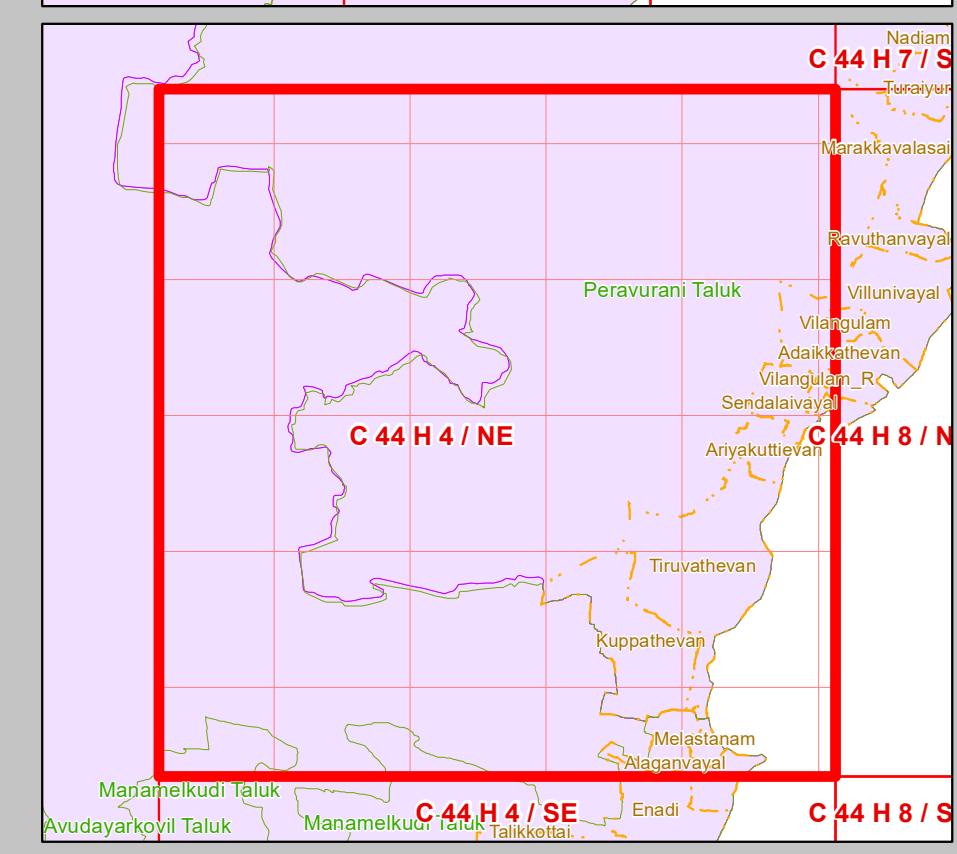


Legend
 Coastal Districts having CRZ
 Districts Out of CRZ

- Legend**
- Lighthouse
 - Fish Landing Centre
 - Fishing Harbour
 - Fishing Port
 - Helipad
 - Health Center/Hospital
 - Multipurpose Evacuation Centre
 - Educational Institution
 - Road
 - Railway Line
 - Seawall
 - High Tide Line
 - Low Tide Line
 - Port Limit
 - Fish Drying or Boat Parking Area
 - Fisherman Settlement
 - Fishing Wards
 - Breakwater/Jetty/Groyne
 - Survey Plots
 - Village Boundary
 - Municipal/Urban Boundary
 - Taluk Boundary
 - District Boundary



- CRZ Lines & Boundary**
- Hazard Line
 - 20m CRZ Line for Island*
 - 50m CRZ Line - CRZ IIIA (NDZ)
 - 200m CRZ Line - CRZ IIIB (NDZ)
 - CVCA Boundary
 - CRZ Boundary
 - Sand Dune Beyond CRZ Boundary (500m Line, 50m Line for Bay, 50m or width of the creek whichever is less along the tidal influenced water bodies and 50m Mangrove Buffer Zone)



- CRZ CATEGORY**
- CRZ - I**
- Eco Sensitive Zone - CRZ IA
 - CRZ - IA
 - 50 m Mangrove Buffer Zone - CRZ IA
 - CRZ - IB
- CRZ - II**
- CRZ - II
- CRZ - III**
- No Development Zone
 - 50 to 500m from HTL - CRZ IIIA
 - 200 to 500m from HTL - CRZ IIIB
- CRZ - IV**
- CRZ - IVB
 - CRZ - IVA (Upto 12 NM)

DATA SOURCE

I) National Centre for Sustainable Coastal Management
 1) HTL, LTL 2) CVCA 3) CRZ - IA 4) Infrastructure Facilities such as Lighthouse, Road, Seawall, Breakwater/Jetty/Groyne.

II) Survey of India
 1) Hazard Line

III) Tamil Nadu State Coastal Zone Management Authority
 1) Administrative Boundaries,
 2) Infrastructure Facilities such as Health Center/Hospital, Helipad, Multipurpose Evacuation Centre, Education Institution, Fish Landing Centre, Fishing Harbour, Fish Drying or Boat Parking Area,
 3) Fisherman Settlement & Fishing ward,
 4) Port Limit etc.

ABBREVIATIONS

CRZ : Coastal Regulation Zone
 NDZ : No Development Zone
 CVCA : Critically Vulnerable Coastal Areas

NOTE

1) CRZ - I areas are further classified on Land Use map and CZMP map shall be used along with Coastal Land Use map.

2) 50m Mangrove Buffer Zone is provided for both Government land and Private land

3) ISLANDS: 20m CRZ Line from HTL is valid only after approval of IMP of the particular island. IMPs of the particular island shall be prepared by concerned States/UTs and got approved by MoEF&CC.

Updated During 2019 - 2022

PREPARED AS PER COASTAL REGULATION ZONE NOTIFICATION, 2019

Prepared by

National Centre for Sustainable Coastal Management
 (Ministry of Environment, Forest & Climate Change)
 Chennai - 600 025

Department of Environment and Climate Change
 Government of Tamil Nadu